

International Specification for Ski-Orienteering Maps

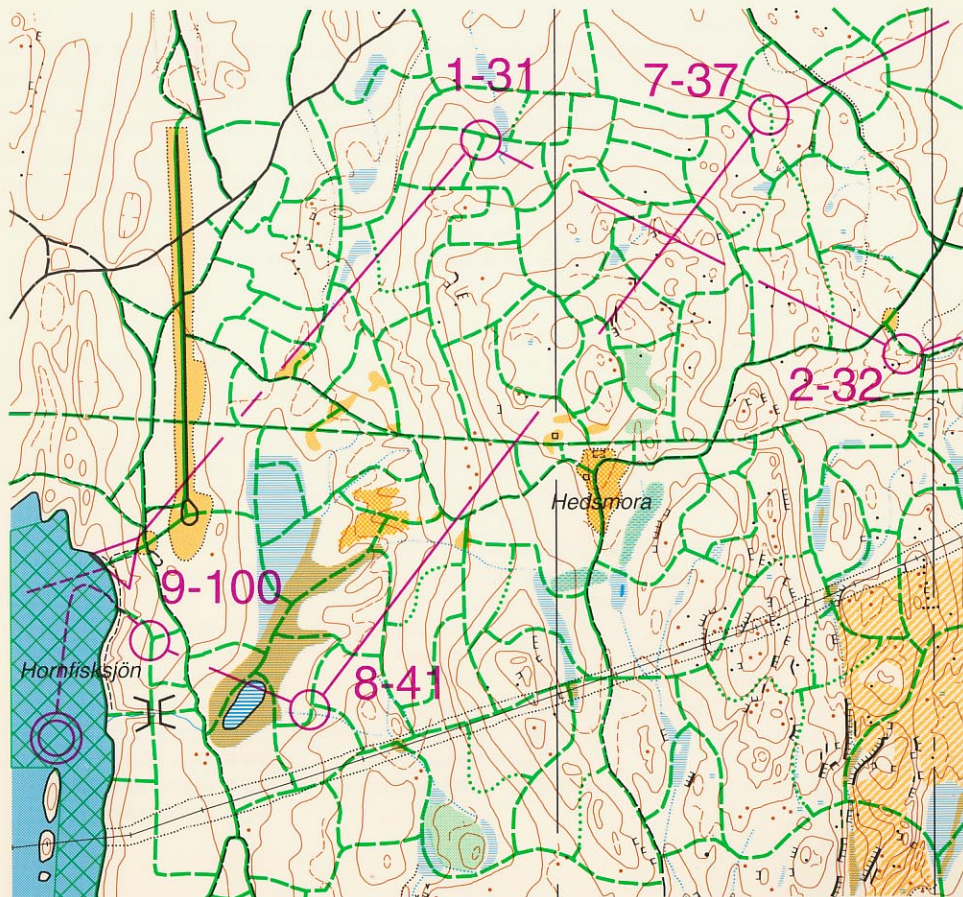
INTERNATIONAL ORIENTEERING FEDERATION
Ski-O Committee (IOF/SC)

This specification is valid from 1.11.1994.

Contents	Page
1 Introduction	2
2 General requirements	2
3 Map specification	2
4 Explanation of symbols	2,3
5 Application examples	1,4

5 APPLICATION EXAMPLES (with overprinted track network and courses)

5.1 Ordinary foot-O map without additions or deviations. Scale 1:10000.



1 INTRODUCTION

As a base, the International Specification for Orienteering Maps is valid also for Ski-Orienteeing maps. For special maps for Ski-O, deviations and additions according to the following specification are valid. Deviations from the specification are permissible only with the sanction of the national Ski-O committee. For international events sanction must be given by the IOF/SC.

Complete foot-orienteering maps may very well often be used in Ski-O competitions at all levels, if the dark green (symbol 410) is replaced by light green (symbol 406). For international events, permission from IOF/SC is required.

2 GENERAL REQUIREMENTS

2.1 Ski-Orienteeing and the map

In Ski-O the competitors' skiing and navigation skills shall be tested in such way that the navigation skill becomes the decisive element. This can be achieved only if the map is sufficiently accurate, complete and reliable, and is also clear and legible under competition conditions. The better the map the course setter has, the greater the chance he has of setting good, fair courses, whether it be for the elite or for the novice.

2.2 Contents

A Ski-O map is a topographic map. It must show every feature which could influence map reading or route choice - path and track network, all ski tracks and ski courses, land forms, hydrography, buildings, the ground surface and features which aid ski navigation.

As far as the selected scale will allow, the Ski-O map should include all features which are clearly visible on the terrain covered with snow and the ski track network is very important. The map must contain the features which are obvious on the ground and which are of value from the point of view of map reading. Nevertheless an attempt must be made when surveying to maintain the clarity and legibility of the map, i. e. the minimum dimensions designed for normal sight must not be forgotten when choosing the degree of generalisation.

3 MAP SPECIFICATION

3.1 Scale and vertical interval

The map scale shall be 1:15000 or 1:10000 and the vertical interval 5 m. A different scale or vertical interval may be used, but permission shall be obtained from IOF/SC at international events and from the national Ski-O committee for other events.

The reduction in scale has made it possible to build a more dense and easily legible track network. Furthermore, the error probability has decreased, as the shapes of the junctions and the departure angles of the tracks can be drawn correctly on the map.

4 EXPLANATION OF SYMBOLS

Map symbols not required on special Ski-O maps, and which may be deleted on foot-orienteering maps adapted for Ski-O:

103	Form line	211	Open sandy ground	313	Spring
108	Small earth wall	212	Bare rock	314	Special water feature
110	Small erosion gully	302	Pond	410	Vegetation: Very difficult to run, impassable. To be replaced by 406 for Ski-O
112	Small knoll	303	Waterhole		
114	Small depression	307	Minor water channel		
115	Pit	308	Narrow marsh	508	Less distinct small path
116	Broken ground	311	Indistinct marsh	521	Ruined stone wall
				524	Ruined fence

4.3 Water and marsh







- 301 All large areas of water are shown with a dot screen of 50%. Areas smaller than 1 mm² on the printed map are shown with full colour.

4.7 Track overprint

The ski-track network is indicated by green symbols for track width. When a track follows a path, the green is superimposed on the path. The symbols are drawn with a compact and clearly visible shade of green (PMS 354 is recommended).

Opened skiable dirt roads are shown only with black.

The dimensions given refer to the printed scale (1:1).

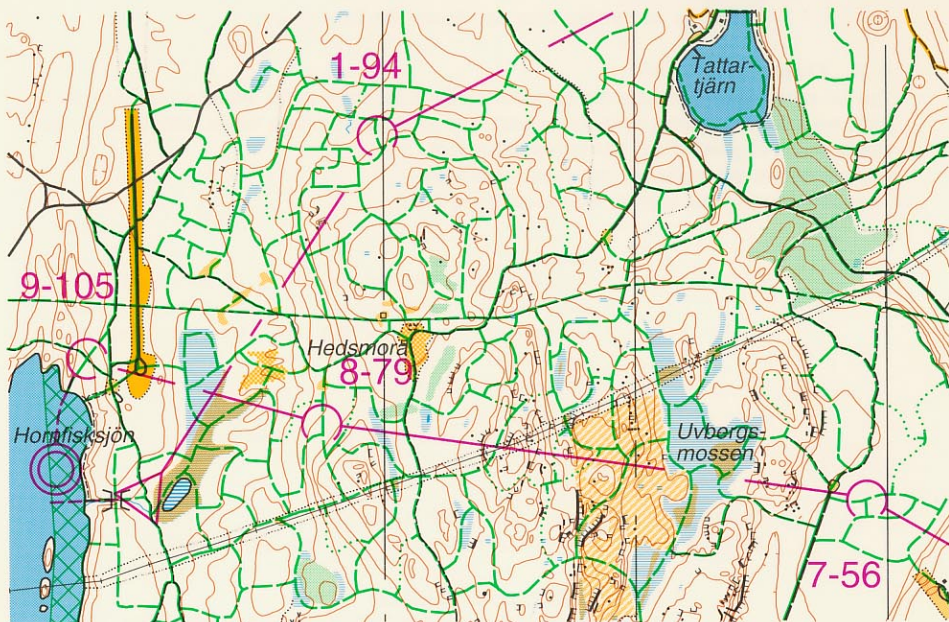
	701 0.35-0.5 mm	<u>Min. 2 m</u> Solid line. Track width at least 2.0 m. Both 0.35 and 0.5 mm width can be used for symbols 701-703 on the same map, depending on the density of the track network in areas in question.
	702 0.35-0.5 mm	<u>1-1.5 m</u> Dashed line. Track width 1.0 - 1.5 m.
	703 Diameter 0.35-0.5 mm	<u>0.8-1.0 m</u> Dotted line. Track width 0.8 - 1.0 m. Narrow, soft, winding track, also difficult slopes.
	704 0.5 mm	<u>Road covered with snow</u> A road on the map covered with snow during the competition. The symbol is a crossline across the road. The symbol can also be used on green track symbols to show that the track is not opened.
	705 0.5 mm	<u>Sanded or snowless road</u> A road on the map which is sanded or snowless during the competition is shown by a chain of V-symbols across the road.
	706 Diagonal squared pattern 0.18 mm, c/c 2.0 mm	<u>Prepared slalom slopes and similar areas</u>

NOTE: All junctions and crossings are to be drawn continuously (it must be possible to recognize the exact position of the junction/crossing!). This is valid also for dotted tracks. For highest precision, register marks (superimposed crosses) are recommended.

If a road printed in black is not open, but has tracks on it, there has to be a track appropriately printed in green beside the road.

A route or road which is out of bounds is shown by a series of crosses, printed in purple.

5.2 Foot-O map adapted for Ski-O (some foot-O symbols deleted). 1:15000.



5.3 Special Ski-O map. Scale 1:15000. Tracks 0.35 + 0.5 mm.

